



# TORQUETUBE

**Newsletter of Riley Motor Club Qld Inc March 2012**



**And Now For Something More Than A Little Different  
(And Genuine Riley)**

Courtesy of The Don River Railway

**Editor:** Bill Short  
[williamshort@aapt.net.au](mailto:williamshort@aapt.net.au) Ph.0738867236

**Next Meeting:**  
Thursday, 8th March 2012.  
Girl Guide Hut  
Corner Pullen & Osborne Roads  
Everton Park

*DISCLAIMER: The Riley Motor Club Qld Inc. accepts no responsibility for the results of contributor's advice, nor does it endorse any services/ goods/ products offered by advertisers. Opinions expressed in this Newsletter are not necessarily those of the Club, its Officers, or its Editor.*

## Minutes of ANNUAL GENERAL MEETING of Riley Motor Club, Qld., Inc.

held at the Girl Guide Hut, Corner Pullen & Osborne Roads, Everton Park, Thursday 9<sup>th</sup> February, 2012.

Meeting opened by President Ken Lonie at 8.02 pm with 21 members present.

### Apologies:

Ross & Dianne Phillips, Pat & Betty Elliott, Jack Warr, Graham Mackay, Simon & Helga Schooneveldt.

### Minutes of the 2011 Annual General Meeting:

Moved: Bill White, Seconded Sheila Hill that the Annual General Meeting Minutes be accepted. Carried.

### Business Arising from Previous Minutes:

Nil.

### Auditor's Report for the year 2011:

To be advised in the next Newsletter.

### Office of Fair Trading:

No request received from the Office of Fair Trading.

### President's Report:

Ken briefly outlined his report to the meeting. Copy will be found in the March Newsletter.

### Conrod Trophy:

Bill White presented the Conrod Trophy to Bill Short for his club activities during the year, including editorship of the Torque Tube.

### Election of Committee Members for 2012:

Bill White has been negotiating use of a building at the previous CSIRO site at Samford. Ken proposed the position of shed co-coordinator. Carried.

Ken declared all positions vacant and requested member Brian Jackson to take the chair for the election of the new committee.

Position	Nominated	Nominated	By Seconded	Elected
President	Ken Lonie	Alan Hill	Lyn Jackson	Elected
Vice President	Alan Hill	Ken Lonie	Ian Henderson	Elected
Secretary	Matthew French	Bill White	Alan Hill	Elected
Treasurer	Linden Thomson	Ken Lonie	Matthew S.	Elected
Club Captain	Robin Hull	Ken Lonie	Sheila Hill	Elected
Editor	Bill Short	Bill White	Gary Britton	Elected
Spare Parts	Jack Warr	Matthew S.	Ken Lonie	Elected
Ass Spare Parts	Graham Mackay	Bill White	Linden Thomson	Elected
Registrar	Matthew Schooneveldt	Wendy Lonie	Lyn Jackson	Elected
Web Coordinator	Linden Thomson	Alan Hill	Ken Lonie	Elected
Shed	Bill White	Gary Britton	Trevor Judd	Elected

Elected Officers present took up their positions.

**Other Business:** Robin Hull moved Jack Warr be awarded life membership. Seconded Bill Short.

Meeting closed at 8.30pm.

## Minutes of the OGM of the Riley Motor Club, Qld., Inc. held at the Girl Guide Hut, Corner Pullen & Osborne Roads, Everton Park, Thursday 9<sup>th</sup> February, 2012.

Meeting opened by President Ken Lonie at 8.30 pm with 21 members and guests present.

**Apologies:** Ross & Dianne Phillips, Pat & Betty Elliott, Jack Warr, Graham Mackay, Simon & Helga Schooneveldt.

**Minutes from previous meeting:** Moved Ian Henderson, seconded by Wendy Lonie, that minutes be accepted. Carried.

**Business arising from minutes:** Nil.

### Inwards correspondence:

1. Annual return of associations form.
2. Invitation to Toowoomba and District Old Machinery Expo at the Toowoomba Showgrounds 3<sup>rd</sup> & 4<sup>th</sup> March.
3. Fliers for the Rubbershop, now at Shop 2/28 Moonbi Street, Brendale, 32051914. New owner is Doug Matthews.
4. Fliers for MacLean's Bridge at Lakeside 20<sup>th</sup> May.
5. Flier for David Hack Classic Meet, Boundary Road, Toowoomba, 6<sup>th</sup> May.
6. Newsletters –Blue Diamond.

### Outwards correspondence:

Nil.

Moved by Matthew French seconded by Alan Hill that the inwards correspondence be received. Carried.

### Treasurer's report for January 2012:

Balance as per Bank Statement, 1 January 2012

**\$ 8531.88CR**

Income

2012 Rally entries	\$ 140.00
Membership fees	\$1926.00

Interest	\$ 1.08	\$ 2067.08
Expenditure		
Nil	\$ 0.00	
Balance as per Bank Statement, 31 January 2012		<b>\$10598.96CR</b>

Moved by Lindon Thomson that his Report be accepted, seconded Gloria French. Carried

**Club captain's report:** Proposed runs.

March – National Rally, Toowoomba.

April – Local rally at Easter, Roma Rally at Easter.

May – Local rally.

June – QHMC rally at Maryborough.

July – Rally to Gympie/Gympie Rattler.

August – Rally to Leyburn.

September – Blind Citizens Day at Lakeside 29<sup>th</sup>.

**Spare parts report:** Nil.

**Registrar's report:** Nil.

**2012 rally report:** Expected to be 50 entries. Venue change for rally head quarters, Friday & Saturday dinners to the DDVVCC rooms at 2 Rocla Court. Sunday dinner to be at Platform Nine.

**Editor's report:** Still waiting for articles. Cost of posted TT is \$50 annually with subs only \$35. This cost needs to be passed on to those receiving a posted copy.

**Website co-ordinator's report:** Nil.

**Shed Coordinator:** The shed is expected to be used for storage of spares, memorabilia, books, magazines etc.

**Next Meeting:**

**Thursday, 8th March 2012.**

**Girl Guide Hut**

**Corner Pullen & Osborne Roads**

**Everton Park**

## Presidents Report for 2011 Year

The past year of 2011 has been another active one for the club.

A number of new committee members joined the executive committee at the previous AGM, thereby giving a deserved break to those members who have continuously held committee positions for many years.

April saw a large contingent of 14 cars head off from Queensland for the national rally in Beechworth, Victoria. The Lonie Monaco (again) and the White RMB failed to make it, but are now both back on the road.

Macleans Bridge at Lakeside was well attended by members on 15 May and a respectable number of cars also attended the QHMC and RACQ rally in Toowoomba on 11<sup>th</sup> June.

The July run was to the Boonah airstrip and then in August, a number of cars attended the Caboolture airshow.

Lunch on the Wynnum foreshore was the rally in September and then in October, about 8 cars travelled to Donnybrook/Toorbul for morning tea, with lunch at Beerwah Hotel.

In November, we headed off to Yatala Pie shop and then to Mt Tambourine for lunch and welcomed a new car (an RME) and members.

Our Christmas lunch for 2011 was held in December at Maleny with a large number of cars attending. This was followed in late December with our annual Christmas dinner at South Bank TAFE.

January saw another well attended rally with the Presidents run to Fort Lytton, with a picnic lunch at the site.

During the year, considerable effort has gone into preparations for the National rally to be held in Toowoomba in March 2012. Ross and Di Phillips started this process off once again with their well recognised organisational skills. Unfortunately, they have had to pass the banner to other committee members, particularly Wendy Lonie, following Ross's illness and hospitalisation in July.

The National rally in Toowoomba is progressing well, although not without difficulty, with a change of venue for meals required at the eleventh hour.

During the year, we have also seen a change in venue for our monthly meetings from South Brisbane to Nudgee following a move by the Sporting Car Club. Members found the Nudgee venue unsuitable due to difficulty in negotiating stairs by some members as well as lack of room for a cup of tea at the end of the meeting. Sheila Hill was able to negotiate an arrangement with the Guide Hut at Everton Park with the AGM for 2012 being our first meeting in these new premises. The facility has aged access, far more room, tea and coffee facilities and BBQ facilities nearby.

The year has also seen some action taken on trying to procure access to a storage shed and possible longer term meeting place for the club. Bill White has made progress on access to a storage shed in the old CSIRO buildings at Samford. This item will be progressed during 2012.

During the year, a large quantity of secondhand spares became available from John Payne. These spares were purchased, with the purchase price being recovered through sale of some parts through tender to members. The remaining parts have been given to the club

Jack Warr has continued to make spares parts available to club members at a reasonable price. The fact that Jack supplies some parts he has manufactured locally, to both national and overseas members is ample recognition of the value of Jack's efforts. His RMB axles particularly, are well known.

On Behalf of your committee for 2011, I thank you all for your support during the year and I also take this opportunity to thank my committee members who have given of their time over the past year to ensure the club activities run smoothly. I particularly would like to thank the national rally committee for their ongoing work to ensure a successful national rally in March.

I would also like to congratulate Bill White on his efforts as Club Captain for the year as well as his efforts in sourcing a potential shed for use by the club.

Ken Lonie  
President 2011  
9<sup>th</sup> February 2012

## Know your Executive Committee



### **Linden Thomson**

#### **Queensland Riley Club Treasurer**

Born - Pomona Queensland, moved to Sandgate at 2 years of age

Schooling - Sandgate then Churchie (Brisbane)

University – University of Queensland, Bachelor Science  
Computer Studies

Worked – Department of Agriculture and Stock, Ag & Chemistry  
Branch

Now retired

Family – the lovely and very patient Delma, 3 daughters & 2  
granddaughters

Travel – Favourite destination – New Hebrides

Strength – persistence

Hates – Cobblers pegs

Dream car – Dixon 6 Riley

Favourite non Riley car - Ferrari

Favourite cuisine – Thai

Love to have a conversation with (dead or alive) – Percy Riley

Dinner party guests – Richard Dawkins & Christopher Hitchens

Job/career you would pursue if you had your time over again –  
Airline Pilot

Wish for the World – Fewer politicians, fanatics and ideologues

# Coming Events



## Queensland National Rileys, Toowoomba

23<sup>rd</sup> - 26<sup>th</sup> March, 2012

*Just a brief update on Rileys in Toowoomba – Entries have now closed and we have 56 cars attending and 111 Riley folk – 6 couples from W.Aust which is quite a feat. Venues and events are all confirmed, so now we are hoping for fine weather for a wonderful Rally. The Rally Team thank everyone who has offered us encouragement and we wish you safe travels. Anna has even called a State Election on Saturday 24<sup>th</sup> to add an extra dimension to the Event!*

### **RILEY MOTOR CLUB NATIONAL RALLY**

**Friday to Sunday 17<sup>th</sup> - 19<sup>th</sup> August, 2012**

**Wensum Valley Hotel, Golf & Country Club, Taverham, Norwich, NR8 6HP**

The rally venue is located a few miles west of the fine city of Norwich, is set in secluded surroundings on the edge of open countryside and has attractive views over the River Wensum valley. This modern hotel complex offers a wide range of facilities for the leisure and comfort of rally goers, as well as exclusive use of a quiet car park for their accompanying Rileys. A full programme of events is planned for the weekend with many places of interest to visit in this part of East Anglia, which includes the Broads National Park.

Further information, entry forms and details of special hotel rates for rally goers are available from Nick Walton ([nichjwalton@aol.com](mailto:nichjwalton@aol.com)) or Patrick Wilson ([altivolant@btinternet.com](mailto:altivolant@btinternet.com)).

**ROMA HISTORICAL MOTOR CLUB INC.  
EASTER IN THE COUNTRY 2012 - RALLY NO. 15**

**6, 7, 8<sup>th</sup> April 2012**

ENQUIRIES - Contact: Karen Dawes Rally Coordinator.  
46 222286 /0429 442286

Robin Hull has information and entry forms as well.

**Queensland Historic Motoring Council**

**Maryborough Rally**

**9, 10, 11<sup>th</sup> June 2012**

**Rally Director:** Ken Ashford - email: [kenashford@hotmail.com](mailto:kenashford@hotmail.com)  
**Rally Secretary:** Mrs Pat Barbeler - email: [patandjoel964@hotmail.com](mailto:patandjoel964@hotmail.com)

Ph.41222111  
Ph.41212706

Robin Hull has information and entry forms as well.

**Swaps**

<b>March</b>	11	Inverell Showgrounds	0427708730	
	18	Northern Dist. Hot Rodders Redcliffe S/Grounds	0423031630	
	25	Ormiston State School Entry \$2	32073733	
<b>April</b>	15	Willowbank Buick Club Entry \$10		
	22	Carrera Gold Coast		
<b>May</b>	13	Greenbank		
	20	Gatton S/Grounds		
	27	Mudgeeraba S/Grounds	0438890929	
	27	Capalaba State School Entry \$4	0412076846	
<b>June</b>	10	Border swap Kirra, Binya Avenue	0418885502	
	17	Mt.Cotton, Gramzow Rd.	0438763985	
<b>July</b>	8	Mudgeeraba S/Grounds	0427264732	
	22	Chev. Eight Mile Plains School	0421089000	
	28	Nambour S/Grounds	54768388	
<b>August</b>	12	Rocklea S/Grounds	0412183804	
	18	Glenwood Pepper Rd.	0408458303	
	19	Lismore S/Grounds	02-66635239	
	26	Jimboomba Entry \$5		
<b>September</b>	8	Gimpie S/Grounds	54822303	
	16	Beaudesert S/Grounds	55448174	0414066121
	29	FX Holden, Toara Park, Baker Street, Toowoomba	0407353959	
	30	Rocklea S/Grounds	0418763886	
<b>October</b>	7	Chrysler, Mueller College Rothwell	0414809498	
	12-14	Canungra, Military Jeep		
	14	Bundamba, Ebbw Vale Soccer Grounds	0400577355	
	21	Fassifern Car Club, Kalbar S/Grounds	0409075919	
<b>November</b>	3	Hervey Bay, State High School	041943 759	
	25	Beaudesert S/Grounds	041998940	

**Veteran, Vintage, Classic Cars and Parts,  
Automobilia, Memorabilia, Model Cars,  
Antiques, Collectables,  
Australiana**

**Sunday 8th July, 2012**

**ADMISSION ADULTS \$3.00**

- Outdoor sites \$10, including driver (No booking required)
  - Full catering service
- Saturday afternoon set-up available 2pm to 5pm
- Camping available Saturday night - \$15 extra  
Includes amenities and limited powered sites
  - Gates open 5am Sunday for stallholders  
Trading 6am to 2pm Sunday only
- Free parking in grounds – enter from Worongary Rd (see map)

**Contact: Leo (07) 5530 5559**

**Graham (07) 5534 5941 or 0414 989991**

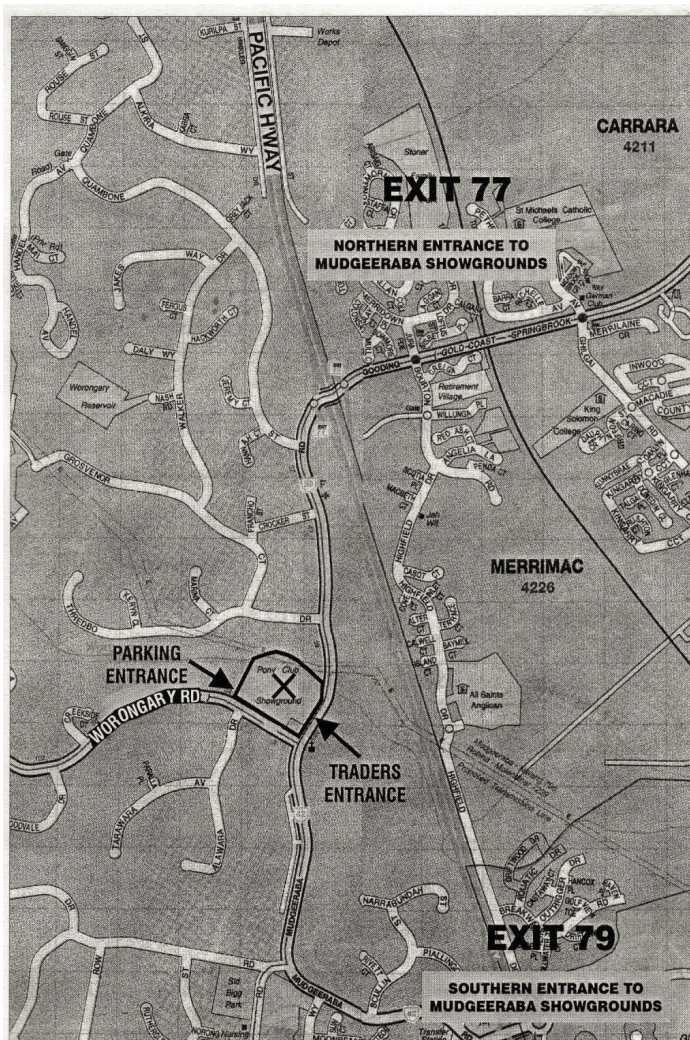
**Margaret (07) 5524 1338 or 0409 241338**

**Email <swap.gcaac@gmail.com>**

**Check website for Swap news:**

**<www.gcaac.com.au>**

**Gold Coast Antique Auto Club Inc.**



## Jack's Elf

It's small and green. It doesn't have a pointy hat but from the back those tail lights do look a bit like pointy ears. Yes it's the Elf, and don't ever call it cute!

I first saw the Elf in 1973. Jack had joined the club a couple of years earlier and had always driven his famous Pathfinder. When I called in at his place that day he mentioned he had bought a new car and was off to pick it up so I offered to take him over in the two and a half to get it. He had never owned anything but a Riley having replaced the earlier one and a half with his green Pathfinder and his next car would be as 'modern as the hour' too.

The Elf's original owner was a doctor who lived on the top of the hill at Windsor. I remember driving up to a very big house with a very small car parked outside. The doctor had travelled to England to buy it new and used it for his honeymoon driving around Europe before shipping it home to Australia. The British Leyland BMC Service Booklet shows he used it well, covering over twelve thousand miles in less than ten months. That sounds like a pretty good honeymoon! Jack used it well himself and drove it more than the Pathfinder for the next forty years. It was always clean and tidy, well maintained and not surprisingly always had the best in spare parts whenever required.

Because it always looked so good it attracted attention wherever it went and Jack always took the time to talk to the admirers. Not everyone has the time to be so polite I have learned!

Because he's been busy with other projects lately and needed time and space to work on the Pathfinder again we came to an agreement and I am now the Elf's third owner.



What he said about it attracting attention was obvious from the first day. Children walking with their mothers stop and point at it and you find little groups gathered around it when you return to the car park, all wanting to chat. And at the stop lights recently two high school girls walking in front just stopped, screamed "Oh My God", and burst out laughing. I'll put that down to some sort of Elf magic and just hope they weren't looking at me.

But the constant attention can become a bit of a strain too! Riley owners in general will know about the sometimes 'over attention' they attract but with the Elf there is one annoying word that seems to surface with every encounter.

Apart from the four in our club I have discovered another four Elves in the Mini club. At least one of the Queensland Elves is used for competition. It is much worked, lowered and has big tyres and numbers painted on the doors. Even this car

suffers from random people wanting to talk as soon as they see it. The owner says he has been ambushed and delayed by talkers so often that he has had to hide around the corner at times and wait till the crowd disperses before dashing out to make a quick getaway. Once, after a hard day at the track and with frayed nerves his patience had finally run out when that word assaulted him again. The admirer was left with mouth ajar at the sharp response:

"You make me sick! It's not \*#!?ing cute, can't you see it's a \*#!?ing race car!"

After so many years I'm happy to again be a Riley owner and will be proud to show it off and talk about the little Elf to anyone interested. And I won't be sick – in fact I think I'm finding the whole experience extremely 'Elfy'.

Ian H

## New Members



We welcome Sue and Rod Longden of Samford who have joined our Club and are presently caretaking Graham Ellwood's RMB. It was through a lucky coincidence.

A year or so ago, Sue and Rod were visiting neighbours of Ken & Wendy Lonie in Maleny - these neighbours live in Rockhampton and only come to Maleny in School Holidays and it just so happened that the neighbours were in residence, Sue and Rod were visiting and Ken drove his 1949 RMB 2½ out of his shed en route to a Riley Rally. Rod commented to the neighbour that it was a magnificent car and expressed a yearning for something similar. The neighbour told Ken and a year later when Graham Ellwood was looking for somebody to care for his Riley, all the pieces of the puzzle came together. Graham is happy, Sue and Rod are very pleased and the Club has gained two new Members – so all up, a Good News Story!



# Club Captain's Report

## First a little note which I feel must be stated.

### *Our Driving Strategy*

As the driver of one of our older cars we should be very considerate towards the feelings of all other road users.

A lot of drivers of other more modern vehicles get extremely annoyed when held up by our vehicles which may not have the performance capabilities of their own. If enough people get sufficiently annoyed and bring the matter to the attention of the authorities and politicians then we may end up having restrictions placed on the use of our beloved cars. We can go a long way towards preventing such actions if we ourselves behave appropriately. Unless travelling on very winding roads where no one can (or certainly should not) pass then all we have to do is leave a sufficient distance (100 meters or more) between our vehicles so that other motorists can pass with as little inconvenience as possible.

We should also pull over into slip lanes etc when possible to enable faster cars to pass when safe to do so.

## Riley Calendar

### March 2012

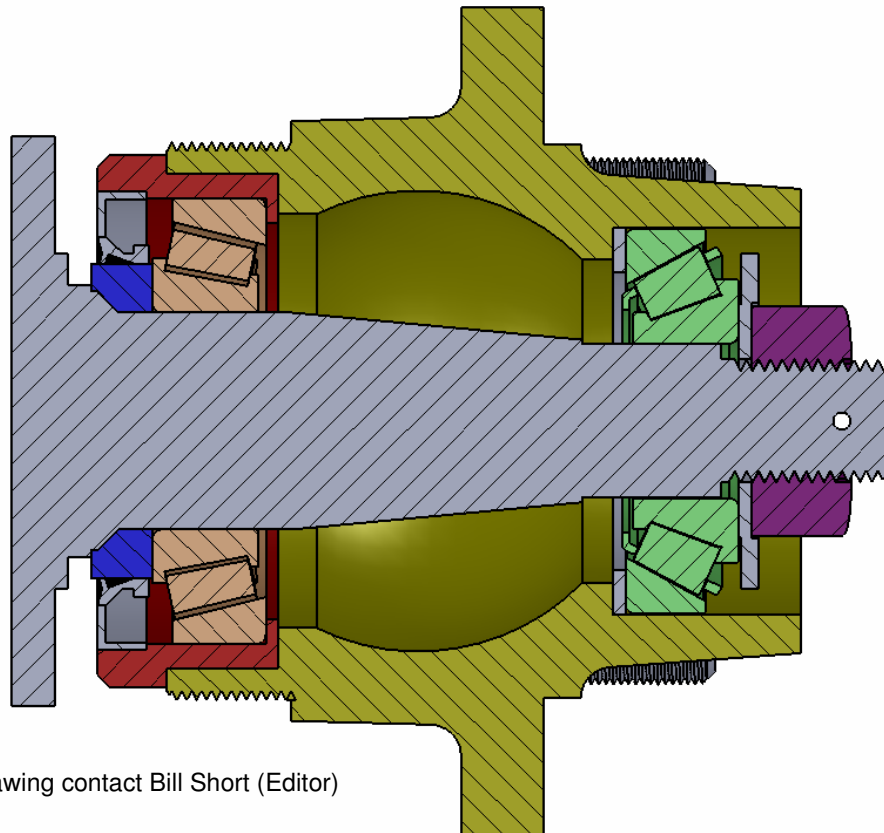
Major Club Outing  
Australian Riley National Rally 23-24-25 at Toowoomba.  
Other activities available to club members  
Saturday 3rd & Sunday 4<sup>th</sup> Machinery Display at Toowoomba

### April 2012

Major Club Outing  
Roma Historical Motor Club Inc.  
Easter in the country rally Friday 6th Saturday 7th Sunday 8th  
Sunday 22nd lunch at Esk details to follow.

## RMB Hub Modification To Take Taper Roller Bearings

Courtesy of Robin Hull



Front bearing FAG 30305A

Back Bearing Fag 30207A

General diagram only. If you

need a fully dimensioned drawing contact Bill Short (Editor)

## Riley 2 1/2 Water Pumps

Looking at a water pump recently I was surprised to observe that the front bearing [the one nearest the pulley] was a ball bearing, where as I was aware that the original had been a roller bearing. I assumed that the reason for the roller bearing was that it would accept a higher loading which may result from the pull of the vee belt. On checking the ratings there is little difference between the two and therefore the ball bearing could well be used. An advantage of the ball bearing is that a sealed unit would dispense with the archaic felt seal. The relative ratings are.

	Size	N <sup>o</sup>	Dynamic Load	Static Load	Speed
Original Roller	17 40 12	N203	11600	9050	18000
Ball	17 40 12	6203	9950	4470	18000
H D Ball	17 40 12	M203	11800	5650	8900

	Size	N <sup>o</sup>	Dynamic Load	Static Load	Speed
<b>Original Roller</b>	17 40 12	N203	11600	9050	18000
<b>Ball</b>	17 40 12	6203	9950	4470	18000
<b>H D Ball</b>	17 40 12	M203	11800	5650	8900

When assembling a water pump (those utilising an open impellor) the clearance between the face of the impellor and the back face of the housing should be kept to the minimum commensurate with not actually rubbing.

**Courtesy of Robin Hull**

## Editors Note

Hi to everyone. For those going to the National Riley's at Toowoomba I hope that all your engines are purring, your bags are packed and the weather gods have been suitably bribed for the occasion.

I would like to thank Sheila Hill for arranging the new venue at the Girl Guide Hut at Everton Park. It is a great venue that allows easy access to all.

I brought up the cost of publishing the Torque Tube at the last meeting. The "actual cost" of the magazine per member is greater than their annual fee subscription. Again I would ask all of you that could possibly arrange to get the Torque Tube by email to email me with your contact details. I know that 100% is not a feasible goal and we will always have to accommodate for the few. I am fine with running off those copies on my printer and sending them out but we need to get it down to a manageable number. I know some of the other clubs are working to the same ends for the same reason. Please I need more snippets and photos. (My fiddle is almost broke and very out of tune!!) Thanks again to robin Hull for supply interesting snippets of information.

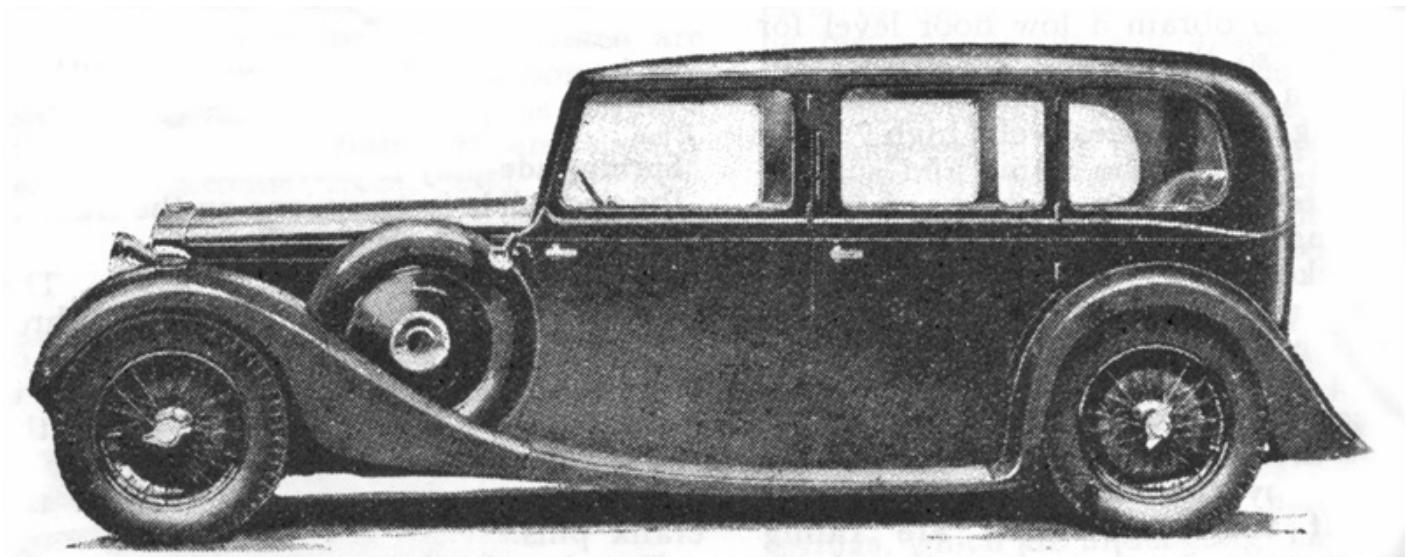
Cheers.

Bill.

### THE 2011 RILEY MOTOR CLUB QLD ELECTED COMMITTEE

PRESIDENT:	Ken Lonie	07 5494 3323
VICE PRESIDENT:	Alan Hill	07 3289 1063
SECRETARY:	Matthew French	07 3353 0532
TREASURER:	Linden Thomson	07 3139 1524
CLUB CAPTAIN:	Robin Hull	07 54964953
SPARE PARTS OFFICER:	Jack Warr	07 3378 3541
ASSISTANT SPARE PARTS OFFICER:	Graham Mackay	0418 719 039
REGISTRAR:	Matthew Schooneveldt	07 3263 1986
EDITOR:	Bill Short	07 3886 7236
WEB COORDINATOR	Linden Thomson	07 3139 1524
SHED COORDINATOR	Bill White	07 3289 4282

**What Model is this? Know your Riley.**



## Your Answer To What Model ? Know your Riley.

### The Riley Red Wing

Never an officially Riley manufactured car but rather a series of modified Rileys that had special aluminium bodies. The name came about from the red painted chassis and the red underbody paint that showed up predominantly under the front mudguards, the blue example shown being an exception to the general rule. They were based on the 10.8 and 11.9 cars.

